



...Go with the Flow.

T-BAR LAY-IN

REGISTERS, GRILLES & DIFFUSERS

NEW
1300 Series
2-Cone Models

*Stamped Steel/Aluminum
Ceiling Type available in
perforated, expanded, cone,
and lanced face styles.*

NEW
782 Series
R-6 Insulation

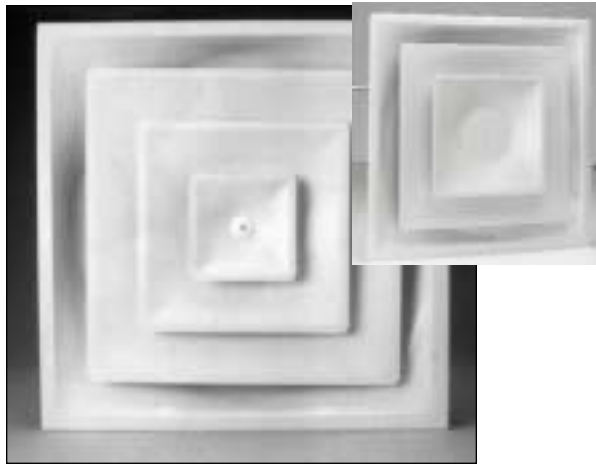
METALBESTOS
SELKIRK
AIRMATE

1300 SERIES

**STAMPED STEEL
CEILING — T-BAR LAY-IN TYPE**

HIGH VOLUME CONE FACE TYPE

- All steel construction.
- Economical high volume performance.
- Available options include:
 - Factory installed damper.
3-Cone (Order 1301) 2-Cone (Order 1303)
 - Field installable damper.
3-Cone (Order 800 DO) 2-Cone (Order 800 DO)
 - Factory installed insulation.
3-Cone (Order 1300 INS) 2-Cone (Order 1302 INS)
 - Factory installed damper with insulation.
3-Cone (Order 1301 INS) 2-Cone (Order 1303 INS)
- Fits 24" x 24" exposed T-Bar ceiling system.
- Nominal collar sizes 6", 8", 10", 12", and 14".
- 2" Collar size available.
- White EDP finish.



1300 SERIES

NEW



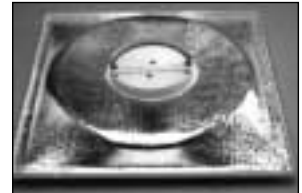
BACK



1300 INS
with Insulation



1301
with Damper



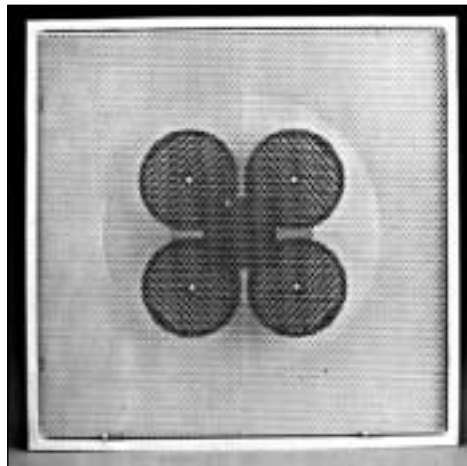
1301 INS
with Damper & Insulation

2100 SERIES

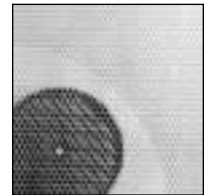
**STAMPED STEEL
CEILING — T-BAR LAY-IN TYPE**

**PERFORATED FACE - LOW PROFILE
STEEL BACK**

- Low profile steel back.
- Perforated face swings open for access to four rotatable deflectors offering 1- to 4-way air pattern deflection.
- Steel perforated face provides clean appearance with 3/16" diameter perforations on 1/4" offset centers and flush mounting within the low profile back.
- Nominal round collar sizes 6", 8", 10", 12," and 14" may be specified.
- Fits 24" x 24" exposed T-Bar ceiling system.
- Return Air without Deflectors (Order 2100-RA).
- Return Air without Deflectors but with Insulation (Order 2100-RA INS).
- White EDP finish. Air pattern deflectors in flat black.



2100 SERIES with Adjustable Deflectors



BACK



2100 INS
with Insulation



2101
with Damper



2101 INS
with Damper &
Insulation

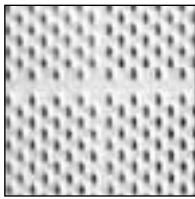


2100-RA
without Deflectors

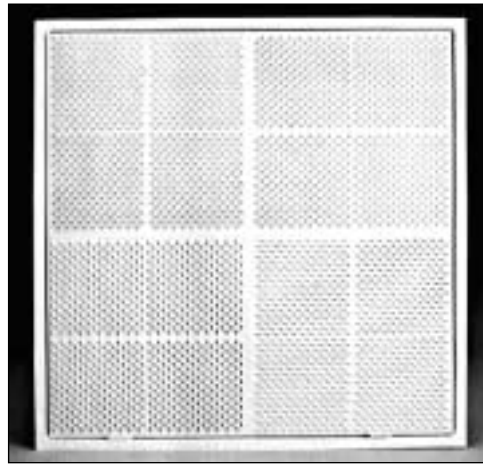
2204 SERIES

CEILING — T-BAR LAY-IN TYPE
LANCED FACE-STEEL BACK

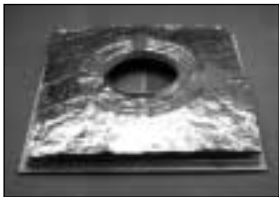
- Unique hooded lance design.
- Provides optimum room air induction and ceiling effect.
- Lanced face swings open for damper control adjustment, or is removable for cleaning.
- Low profile steel formed back with integral round collar sizes 6" - 14".
- Fits 24" x 24" exposed T-Bar ceiling system.
- Available factory installed options:
 - Butterfly Damper (2204 D).
 - Insulation with foil backing (2204 INS).
 - Insulated with Butterfly Damper (2204 D INS).
- Field installable butterfly damper (800 DO).
- White EDP finish.



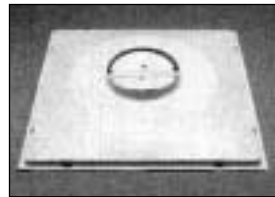
BACK



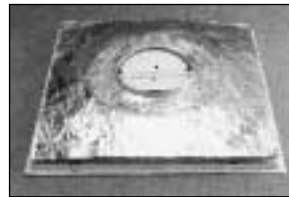
2204 SERIES



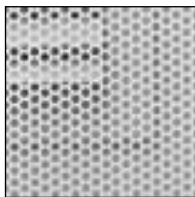
2204 INS
Less Damper with
Insulation



2204 D
with Damper



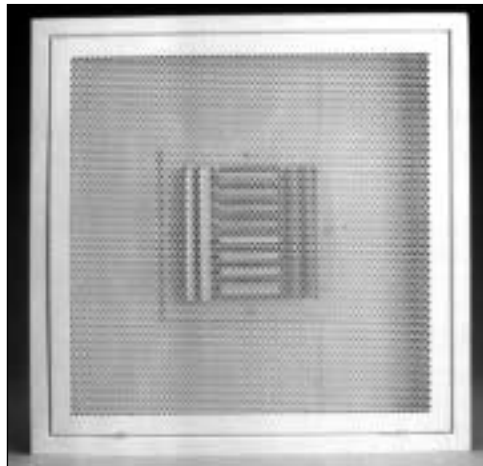
2204 D INS
with Damper &
Insulation



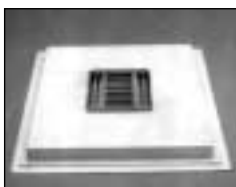
704 FRONT



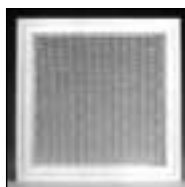
704 BACK



700 SERIES with Adjustable Curved Blade



700 BACK
with Adjustable
Curved Blade



700
Less Register



700 RA
BACK



701 Steel Frame
A701
Aluminum Frame

700 SERIES

STAMPED STEEL/ALUMINUM
CEILING — T-BAR LAY-IN TYPE
PERFORATED FACE-LOW PROFILE
STEEL BACK

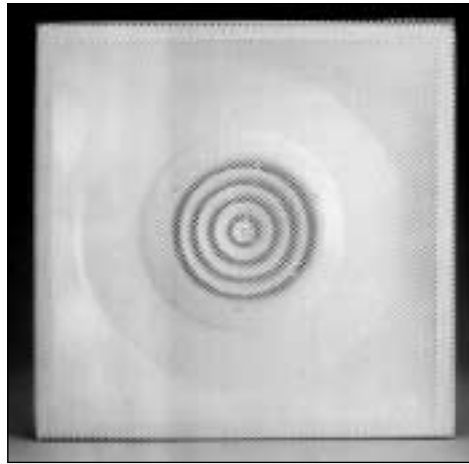
- Adjustable curved blade 4-way pattern.
- Available with opposed blade damper (Order 700 OB).
- Available less register (Order 700 RA).
- Frame only available in 24" x 12", 24" x 24" or 48" x 48" sizes (Order 701). Aluminum frame (Order A701).
- Round neck option available with adjustable curved blade 4-way pattern (Order 704).
- Inquire about 48" x 24" perforated face with adjustable curved blade.
- Collar sizes 6" to 14".
- White EDP finish.

702 SERIES

**STAMPED STEEL
CEILING — T-BAR LAY-IN TYPE**

**EXPANDED FACE-LOW PROFILE
STEEL BACK**

- Steel construction.
- Factory installed round diffuser.
- Available options include:
 - Unit with insulation (Order 702 INS).
 - Factory installed damper (Order 705).
 - Factory installed damper with insulation (Order 705 INS).
 - Unit less round diffuser (Order 703).
 - Unit with insulation less round diffuser (Order 703 INS).
- White EDP finish.



702 SERIES



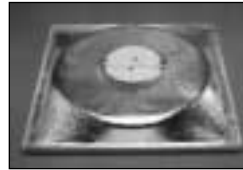
BACK



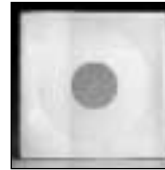
702 INS
with Insulation



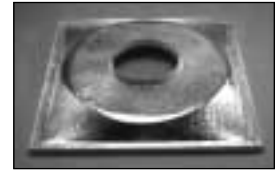
705
with Damper



705 INS
with Damper &
Insulation



703
Less Round
Diffuser



703 INS
with Insulation &
without Round Diffuser

750 R SERIES

**STAMPED STEEL/ALUMINUM
CEILING — T-BAR LAY-IN TYPE**

**EXPANDED FACE - MOLDED FIBERGLASS BACK
1/4" THICK**

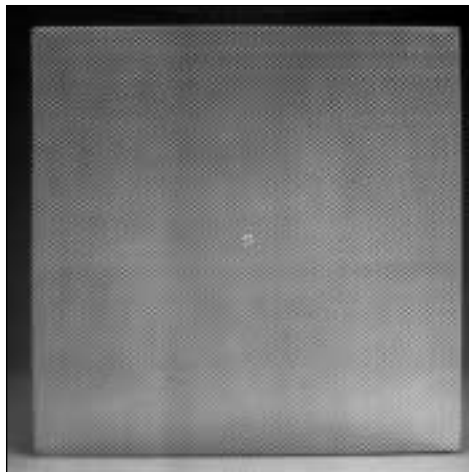
STEEL FACE (750 R)

Return air

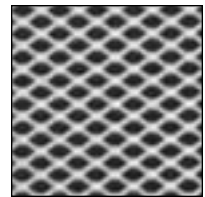
ALUMINUM FACE (A 750 R)

Return air

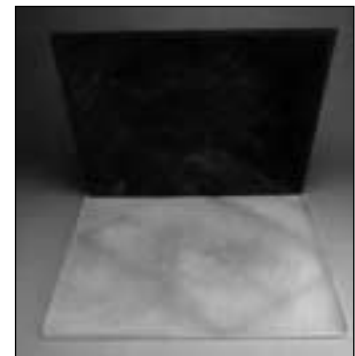
- Accommodates up to 15" collars.
- Molded fiberglass plenum prescored for easy sizing with aluminum foil backing.
- Fits standard 24" x 24" T-bar ceiling.
- (A 750 R) Specify white or aluminum finish.
- White EDP finish.



750 R SERIES RETURN Air



BACK



OPEN

751/752 SERIES

STAMPED STEEL/ALUMINUM
CEILING — T-BAR LAY-IN TYPE

EXPANDED FACE - MOLDED FIBERGLASS BACK
1/4" THICK

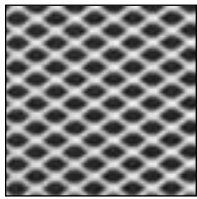
STEEL FACE (751)
Supply with 4-way deflector

ALUMINUM FACE (A 751)
Supply with 4-way deflector

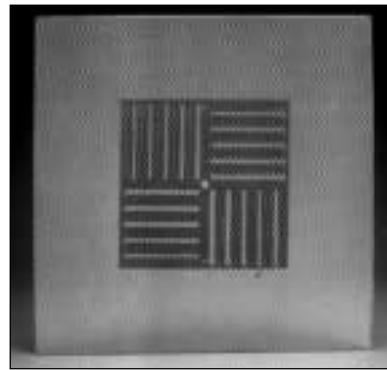
STEEL FACE (752)
Supply with 360° deflector disc

ALUMINUM FACE (A 752)
Supply with 360° deflector disc

- Accommodates up to 15" collars.
- Molded fiberglass plenum prescored for easy sizing with aluminum foil backing.
- Fits standard 24" x 24" T-bar ceiling.
- (A 751/ 752) Specify white or aluminum finish.
- White EDP finish.



751 SERIES OPEN



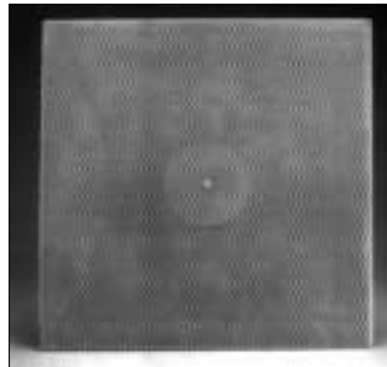
751 SERIES SUPPLY
with 4-Way Deflector



BACK



752 SERIES OPEN



752 SERIES SUPPLY
with 360° Deflector Disc



BACK

762 A SERIES

STAMPED STEEL/ALUMINUM
CEILING - T-BAR LAY-IN TYPE

EXPANDED FACE - MOLDED FIBERGLASS BACK

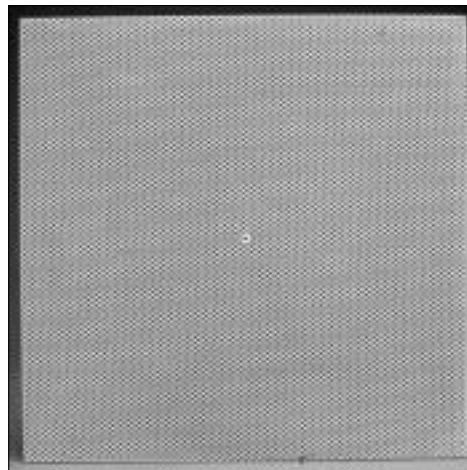
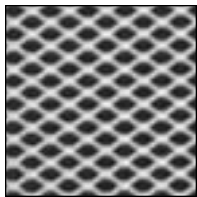
Steel Face (762 A)

Aluminum Face (A 762 A)

Supply with 360° deflector disc

Fiberglass Plenum — 1" Top 1/4" Sides

- Accommodates up to 15" collars.
- Molded fiberglass plenum prescored for easy sizing with aluminum foil backing.
- Fits standard 24" x 24" T-bar ceiling.
- (762 A) Specify white or aluminum finish.
- R-6 Fiberglass Back.
- White EDP finish.



762 A SERIES Factory Assembled SUPPLY
with 360° Disc



OPEN



BACK

770 R SERIES

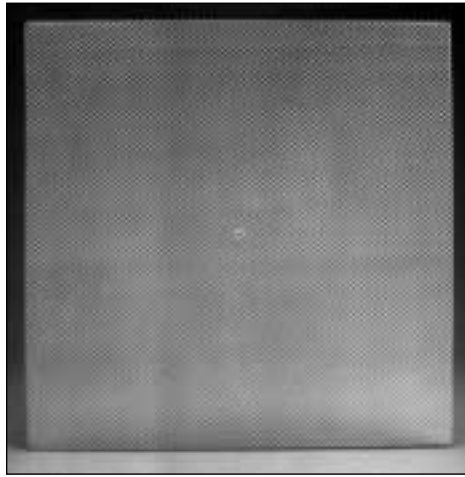
STAMPED STEEL/ALUMINUM
CEILING — T-BAR LAY-IN TYPE

*EXPANDED FACE - MOLDED FIBERGLASS BACK
1/8" THICK*

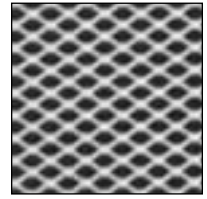
STEEL FACE (770 R)
Return air (without 360° Disc)

ALUMINUM FACE (A 770 R)
Return air (without 360° Disc)

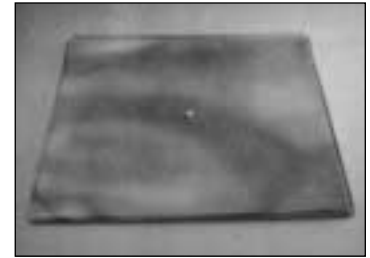
- Accommodates up to 15" collars.
- Molded fiberglass plenum prescored for easy sizing with aluminum foil backing.
- Fits standard 24" x 24" T-bar ceiling.
- (A 770 R) Specify white or aluminum finish.
- White EDP finish.



770 R SERIES RETURN Air



BACK



700P - FACE ONLY
24" x 24" or 24" x 12"

771/772 SERIES

STAMPED STEEL/ALUMINUM
CEILING — T-BAR LAY-IN TYPE

*EXPANDED FACE-MOLDED
FIBERGLASS BACK - 1 1/8"*

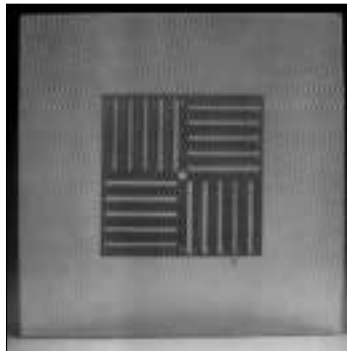
STEEL FACE (771)
Supply with 4-way deflector

ALUMINUM FACE (A 771)
Supply with 4-way deflector

STEEL FACE (772)
Supply with 360° deflector disc

ALUMINUM FACE (A 772)
Supply with 360° deflector disc

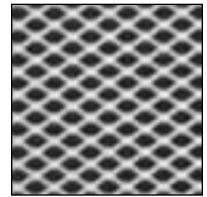
- Accommodates up to 15" collars.
- Molded fiberglass plenum prescored for easy sizing with aluminum foil backing.
- Fits standard 24" x 24" T-bar ceiling.
- (A771/A772) Specify white or aluminum finish.
- White EDP finish.



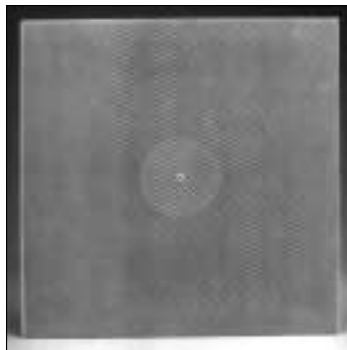
771 SERIES with 4-Way Deflector



771 SERIES OPEN



BACK



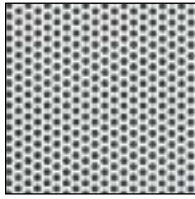
772 SERIES SUPPLY with 360°
Deflector Disc



772 SERIES OPEN



BACK



SUPPLY AIR 782-SA SERIES



RETURN AIR 782-RA SERIES

782-SA/RA SERIES

STAMPED STEEL/CEILING
T-BAR LAY-IN TYPE

PERFORATED FACE-MOLDED
FIBERGLASS BACK - R-6 INSULATION

782-SA Supply Air Diffuser
Supply with four 360° deflector disc
782-RA Return Air Diffuser

- Accommodates up to 15" collars.
- R-6 Value Molded fiberglass Plenum prescored for easy application of spin in duct collars.
- Fits standard 24" x 24" T-bar ceiling.
- White EDP finish.



BACK

TB 170 FF SERIES

STAMPED STEEL/ALUMINUM
FILTER AND DOOR GRILLES

FILTER GRILLE - STAMPED FACE TYPE

T-Bar Ceiling Mount

- Fits standard 24" x 24" T-Bar Ceiling.
- Sizes available included 24" x 24", 24" x 36", 24" x 48"
- Equipped with 20" x 20" filter frame.
- Uses standard 1" x 20" x 20" filter (not included).
- Available options include:
 - Insulated molded fiberglass plenum 24" x 24" size. (Order TB 170 FF INS).
 - All aluminum construction (Order ATB 170 FF).
- Molded fiberglass plenum 23-3/4 square with foil barrier.



TB 170 FF SERIES Filter
Grille-Stamped Face



TB 170 FF INS
with Insulation



TB 170 FF
BACK



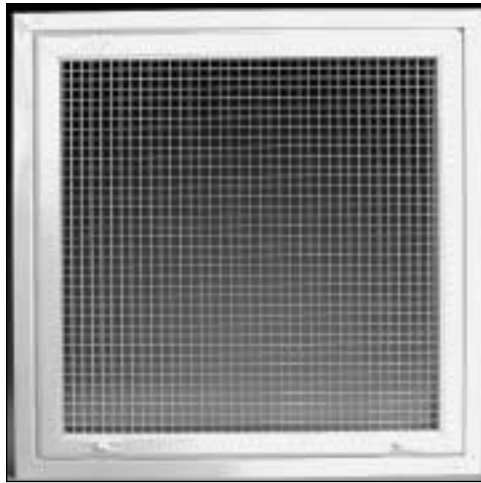
TB 170 FF
OPEN

ETB 900 FF SERIES

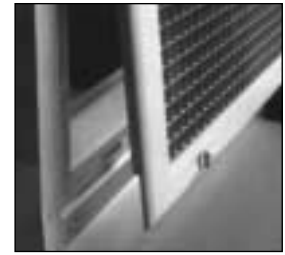
ALUMINUM CEILING — T-BAR LAY-IN TYPE

HIGH VOLUME CUBE CORE
FACE TYPE

- All aluminum construction with extrude frame.
- Recessed frame with hinged 20" x 20" cube core.
- Fits 24" x 24" T-Bar ceiling system.
- Uses 20" x 20" x 1" filter (not included).
- Aluminum grid core 1/2" x 1/2" x 1/2".
- Aluminum or white EDP finish.



ETB 900 FF SERIES



ETB 900 FF BACK



ETB 900 FF
OPEN

WORLD HEADQUARTERS

14801 Quorum Drive
Dallas, Texas 75240-7584
(800) 992-VENT (8368)
Fax (972) 560-2258
WEB: www.selkirkinc.com

SALES OFFICES & CUSTOMER SERVICE

UNITED STATES
14801 Quorum Drive
Dallas, Texas 75240-7584
(800) 992-VENT (8368)
Fax (972) 560-2258
WEB: www.selkirkinc.com

CANADA
375 Green Road
Stoney Creek, Ontario
Canada L83 4A5
(905) 662-6600
Fax (905) 662-5352

RESEARCH/DEVELOPMENT

2000 Chennault Drive
Carrollton, Texas 75006
(972) 661-0308
Fax (972) 661-0164

MANUFACTURING

UNITED STATES
St. Rt. 93 N. & Sutton Rd.
Logan, Ohio 43138
(740) 385-5666
Fax (800) 972-1421

1820 E. Fargo Ave.
Nampa, Idaho 83687-6824
(208) 467-7411
Fax (208) 467-7412

7571 West Highway 153
Winters, Texas 79567
(915) 754-4571
Fax (915) 754-4764

CANADA
1400 California Ave.
P.O. Box 160
Brockville, Ontario
Canada K6V 5V3
(613) 342-6655
(800) 267-8178
Fax (613) 342-2735

6250 Boule des Grandes Prairies
St. Leonard, Quebec
Canada
H1R 1B3
(514) 324-2503
Fax (514) 324-8024

MEXICO
Justo Sierra Y 2 da Avenida
Ojinaga, Chihuahua, Mexico
011 52 14 532 884/85
Fax 011 52 14 532 886

SELKIRK, INC. is a world leading manufacturer of air distribution products for residential and commercial applications. Current operations include locations in the United State, Canada, and Mexico.